

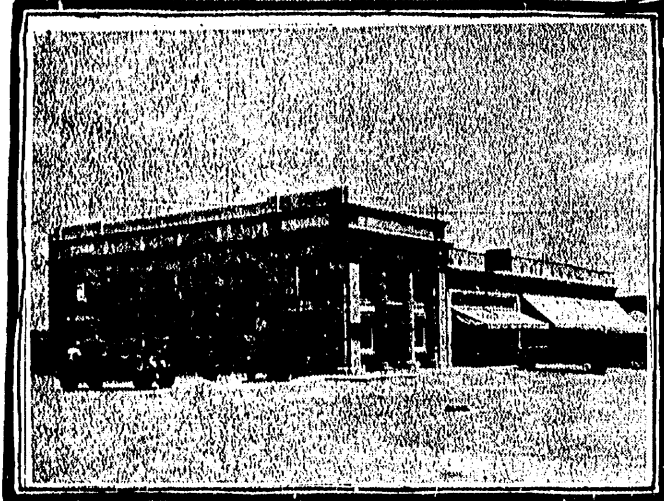
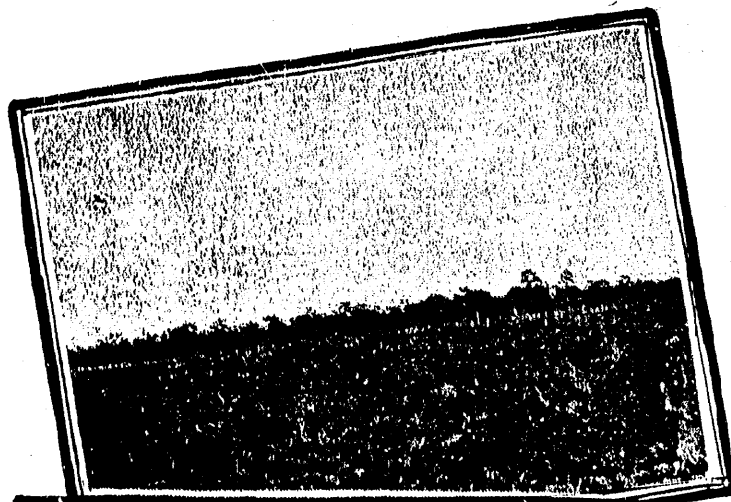
Opportunity

--- awaits no man!

TODAY YOUR ONE
GREAT OPPORTUNITY
LIES IN

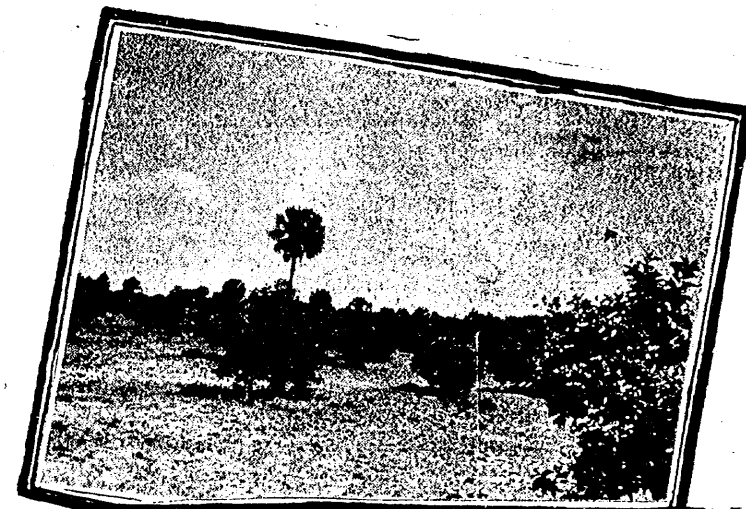
OKEECHOBEE MANORS

--- in the heart of the tropics



Upper—A bit of grazing land in Okeechobee Manors with a view of valuable timber land in the back ground.

Lower—Bank of Okeechobee, one of the modern business institutions of this thriving progressive city.



Upper—Another section of Okeechobee Manors—orange grove with stately coconut palm, standing sentinel.

Lower—Street view of Okeechobee today—the capital city of a vast inland empire.

ONLY lately awakened to the magnificent promise of its natural heritage, its unequalled potential wealth in sun and soil, in year 'round climate and productivity, the great Okeechobee country is entering an era of progress and prosperity which is without parallel in the nation's history.

Development projects now under way provide for railways and waterways, for extensive improvements, which presage the early transformation of this immense inland empire into a virtual metropolitan area, a center of commerce and industry, the inland terminus of all main highways and railway lines, transporting the thousands of visitors and the products of a vast agricultural territory.

Cross-State Highway No. 8, the main Tampa highway, as well as the Fort Pierce and Orlando Highways, are direct avenues of travel between Okeechobee and neighboring cities in all

directions. The Seaboard and the Florida East Coast furnish rail connections with points north and south, making of this city a distributing point for the entire state.

Today, commanding nation-wide attention, the undivided respect and admiration of those who are familiar with its many notable advantages, OKEECHOBEE MANORS forms the nucleus of great development and reclamation activities which will pave the way to prosperity and happiness for the man of VISION—the man who INVESTS NOW!

Located just north of the city of Okeechobee, a city of spectacular promise, on the Fort Drum-Brassinger Highway, Okeechobee Manors comprises acres of farm land, grazing and timber land, and may well be called the "garden spot of America's tropics." It is in the very center of the region's certain northward expansion and development, and is unquestionably the biggest opportunity for real estate investment in the Southland today.

THE DEMAND FOR OKEECHOBEE MANORS PROPERTY HAS BEEN UNPRECEDENTED---AND VALUES HERE ARE INCREASING DAILY; HOWEVER, THOSE WHO TAKE IMMEDIATE ADVANTAGE OF THIS OPPORTUNITY MAY STILL PURCHASE

10 ACRE TRACTS OR MORE AT **\$75 to \$85 PER ACRE**

DEPENDING ON THE SIZE OF THE TRACT

**THIS PROPERTY WILL NOT BE AVAILABLE LONG
AT THE ABOVE PRICES
ACT QUICKLY!**

M.M. Hogan

EXCLUSIVE SALES REPRESENTATIVE.

235 N. E. FIRST AVENUE

TROPICAL DEVELOPMENT COMPANY, OWNERS

PHONE 6296