

36

STATE OF FLORIDA
 COUNTY OF HILLSBOROUGH

THIS IS TO CERTIFY THAT THIS PLAT IS A TRUE AND CORRECT COPY THAT HAS BEEN PHOTOGRAPHICALLY RE-CREATED FROM THE ORIGINAL PLAT AND THE PHOTOGRAPHIC REPRODUCTION HAS BEEN RETOUCHED AS NECESSARY TO CONFORM THE COPY TO THE ORIGINAL PLAT DRAWING OR TRACING THEREOF RECORDED BY THE CLERK OF CIRCUIT COURT OF HILLSBOROUGH COUNTY, FLORIDA. THE ORIGINAL PLAT HAS BEEN PRESERVED AND IS AVAILABLE FOR EXAMINATION UPON REQUEST.

RECORD VERIFIED

WITNESS MY HAND AND OFFICIAL SEAL THIS 10 DAY OF December 1911

RICHARD AKE CLERK
 By *Audrey M. Lasso* DEPUTY CLERK



WEST HYDE PARK

A Subdivision of Block 4, 5, 12, 13, and 14
 This plat is a revision of a portion of the following recorded maps: Block 4, 5 and 12 of West Hyde Park, recorded in plat book 6 page 36. Block 13 & 14, West Hyde Park, recorded in plat book 6 page 28. Block 18 Morrison Grove, recorded in plat book 6 page 24 hereby changed to Block 12, West Hyde Park.
 C. T. Knight, Engineer
 Chas. E. Isbell, De'l. June 1911.

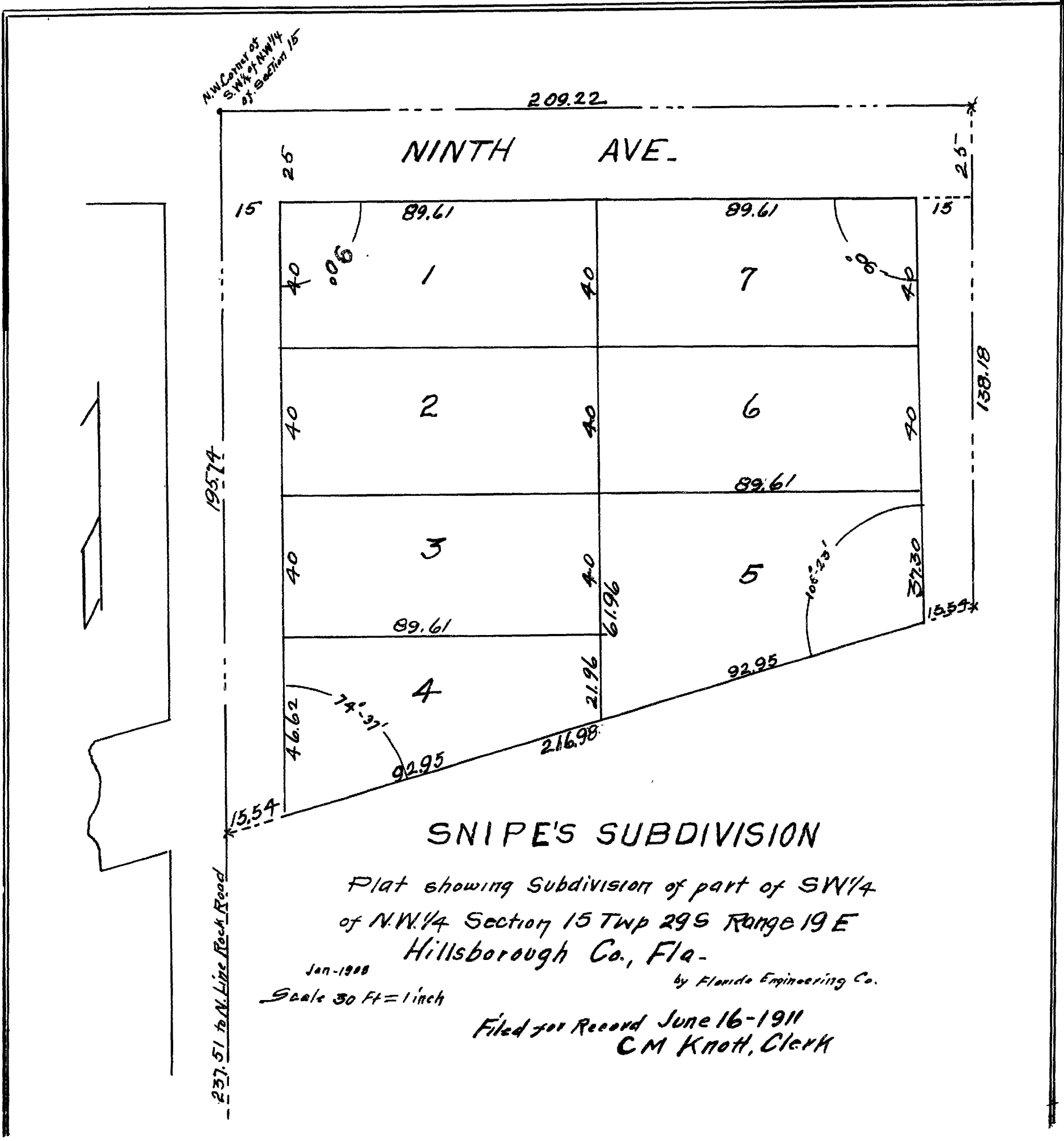
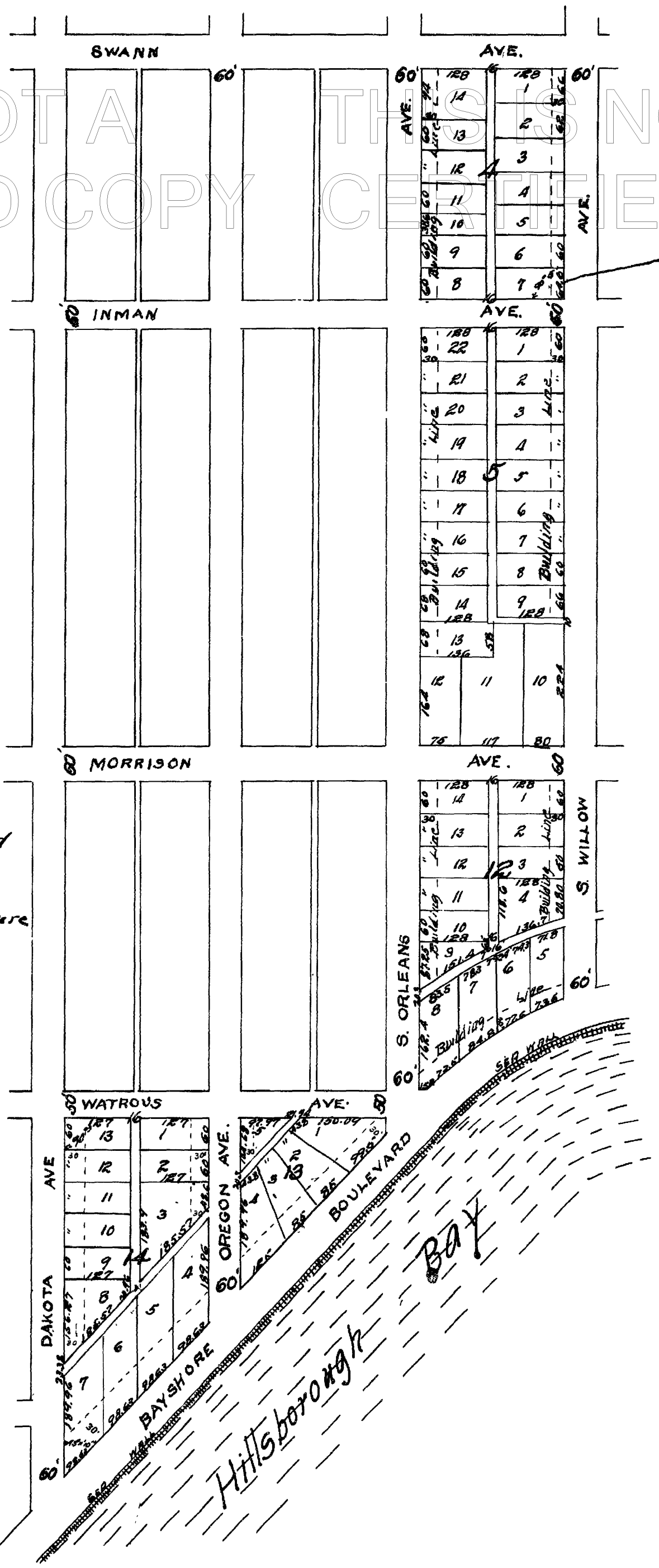
LEGEND

The fee in all streets and alleys, as well as all riparian rights, is herein and hereby reserved to the Bayshore Realty Company, a corporation, its successors or assigns, and an easement is given to the city of Tampa for a public highway only, expressly reserving and retaining in the said Bayshore Realty Company a corporation, its successors or assigns, all right to use of said streets and alleys for street cars, electric light, railroad, telegraph, telephone, water and gas purposes, as well as all riparian rights forever. But it is agreed that the Bayshore Realty Company, its successors or assigns, shall hold the fee to the streets and alleys, as well as the riparian rights in trust, for the protection of lot owners.

Provided further that no wharves or docks shall be constructed in front of any lots fronting on the shore of the Hillsborough Bay save by consent of all lot owners fronting said Bay.

Filed June 3rd 1911 C.M. Knott, Clerk.
 Bay Shore Realty Co. By Eugene H. Blasinger General Manager & Treasurer
 J. M. Watrous
 Francis M. Poland
 Harry J. Watrous

Scale 200 ft. To 1 in.



Filed June 3rd 1911
 C.M. Knott Clerk
 By Francis M. Poland De.