

PLAT

Showing Property owned
by A.B. Moseley in

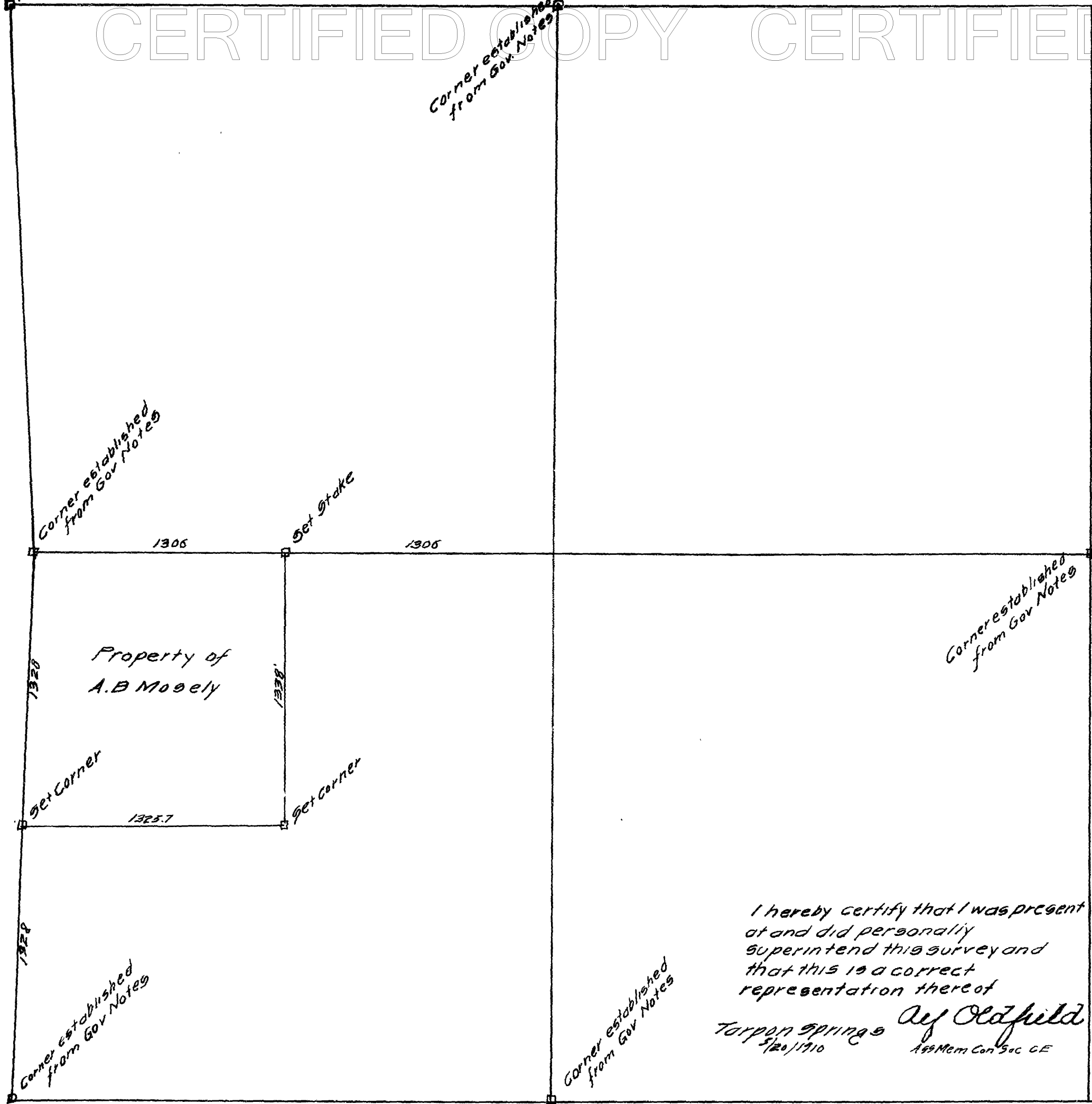
Sec. 27, T. 29 S. R. 15 E In State of Florida
Hillsboro County

Scale 1" = 500'

Corner established from Gov. Notes

Filed June 17, 1910
C.M. Knott
Clerk.

Corner established from Gov. Notes



I hereby certify that I was present
at and did personally
superintend this survey and
that this is a correct
representation thereof
Ray Oldfield
Torpan Springs
12/1/10
Asst. Mem. Com. Sec. C.E.

STATE OF FLORIDA
COUNTY OF HILLSBOROUGH

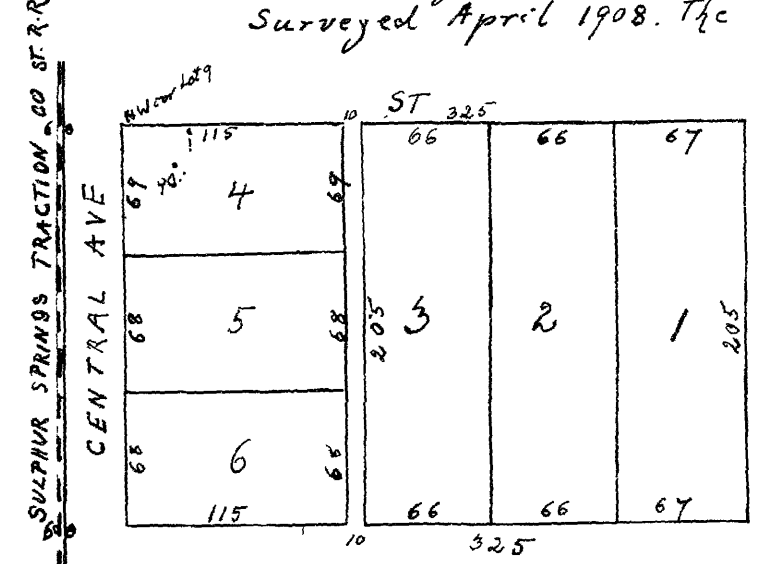
THIS IS TO CERTIFY THAT THIS PLAT IS A
TRUE AND CORRECT COPY THAT HAS BEEN
PHOTOGRAPHICALLY RE-CREATED FROM THE
ORIGINAL PLAT AND THE PHOTOGRAPHIC
REPRODUCTION HAS BEEN RETOUCHEE AS
NECESSARY TO CONFORM THE COPY TO THE
ORIGINAL PLAT DRAWING OR TRACING THEREOF
RECORDED BY THE CLERK OF CIRCUIT COURT
OF HILLSBOROUGH COUNTY FLORIDA THE
ORIGINAL PLAT HAS BEEN PRESERVED AND IS
AVAILABLE FOR EXAMINATION UPON REQUEST



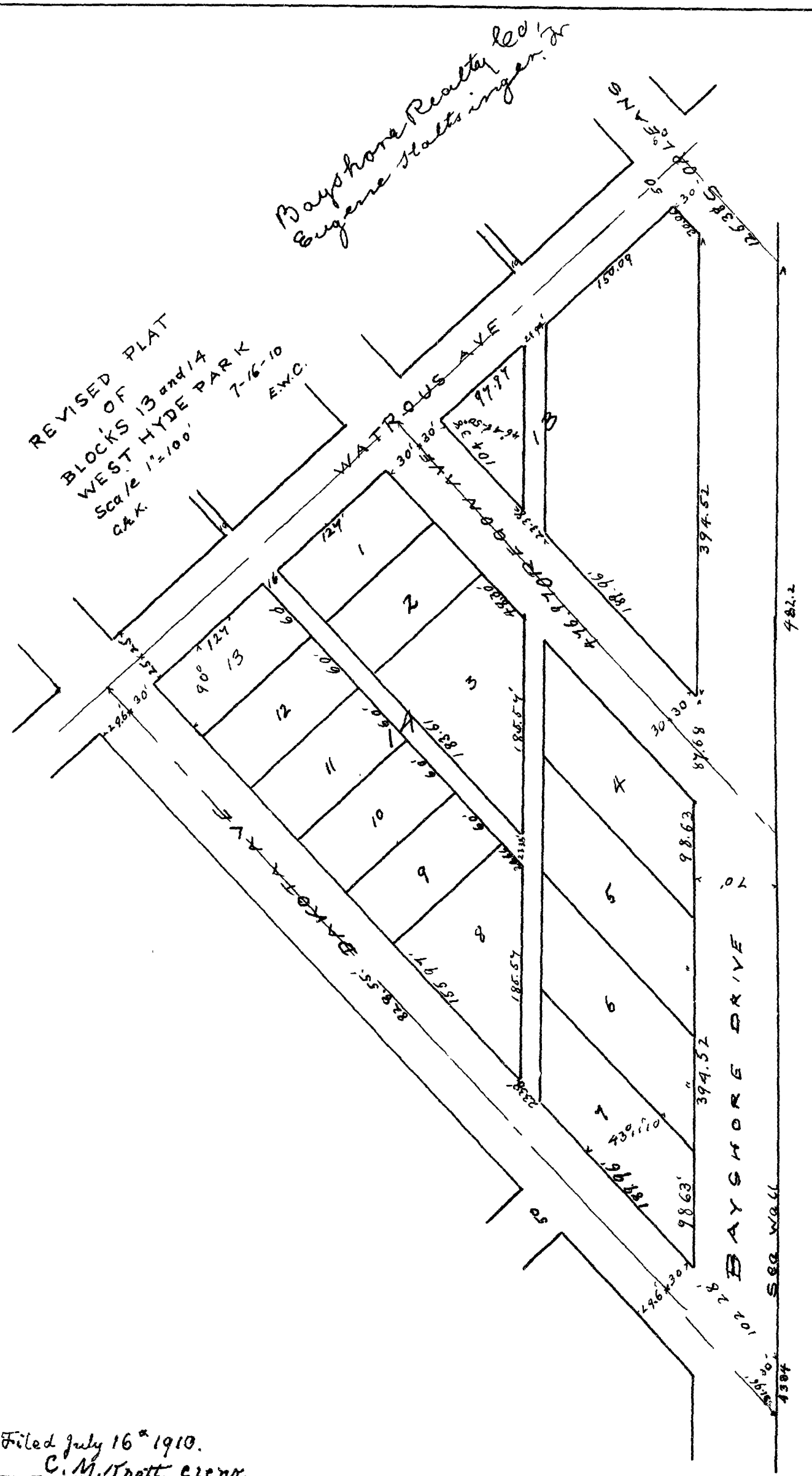
RECORD VERIFIED
WITNESS MY HAND AND OFFICIAL SEAL THIS
10 DAY OF December 19 10
RICHARD AKE CLERK
BY *Richard M. Lane* DEPUTY CLERK

THIS IS NOT A
CERTIFIED COPY

W.T. BOYD'S
Subdivision
Beginning at the NW corner of Lot 9 of
Block 1 of Woodhaven Subdivision as
per plat recorded Dec 8 1903 Plat Book 2
p 33. running East 325 ft South 205 ft
W 325 ft, North 205 ft to point of beginning.
Hillsborough Co, Fla
Surveyed April 1908. The Southern Engineering Co.



Filed June 29th 1910
C.M. Knott Clerk.



Filed July 16th 1910.
C.M. Knott Clerk.