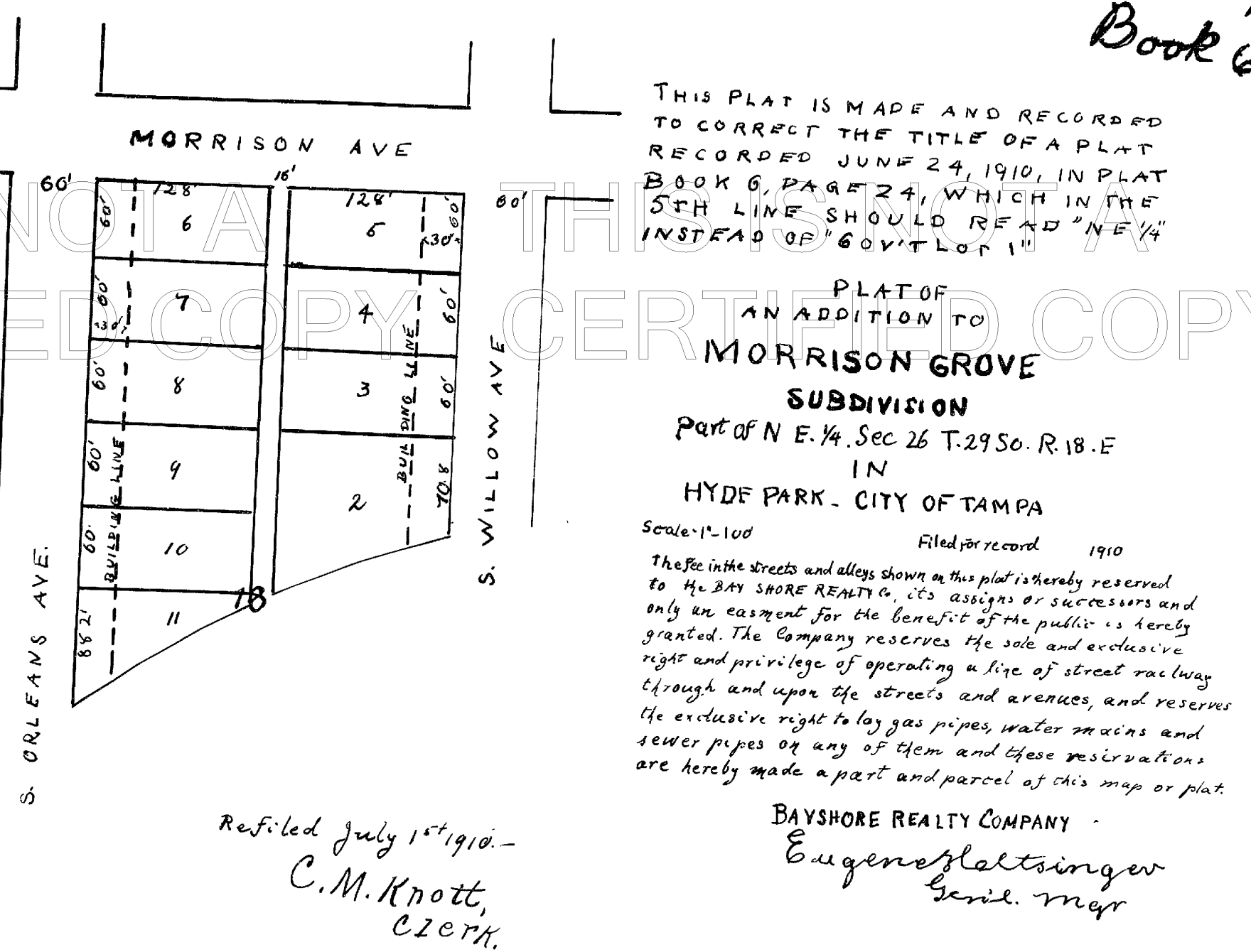
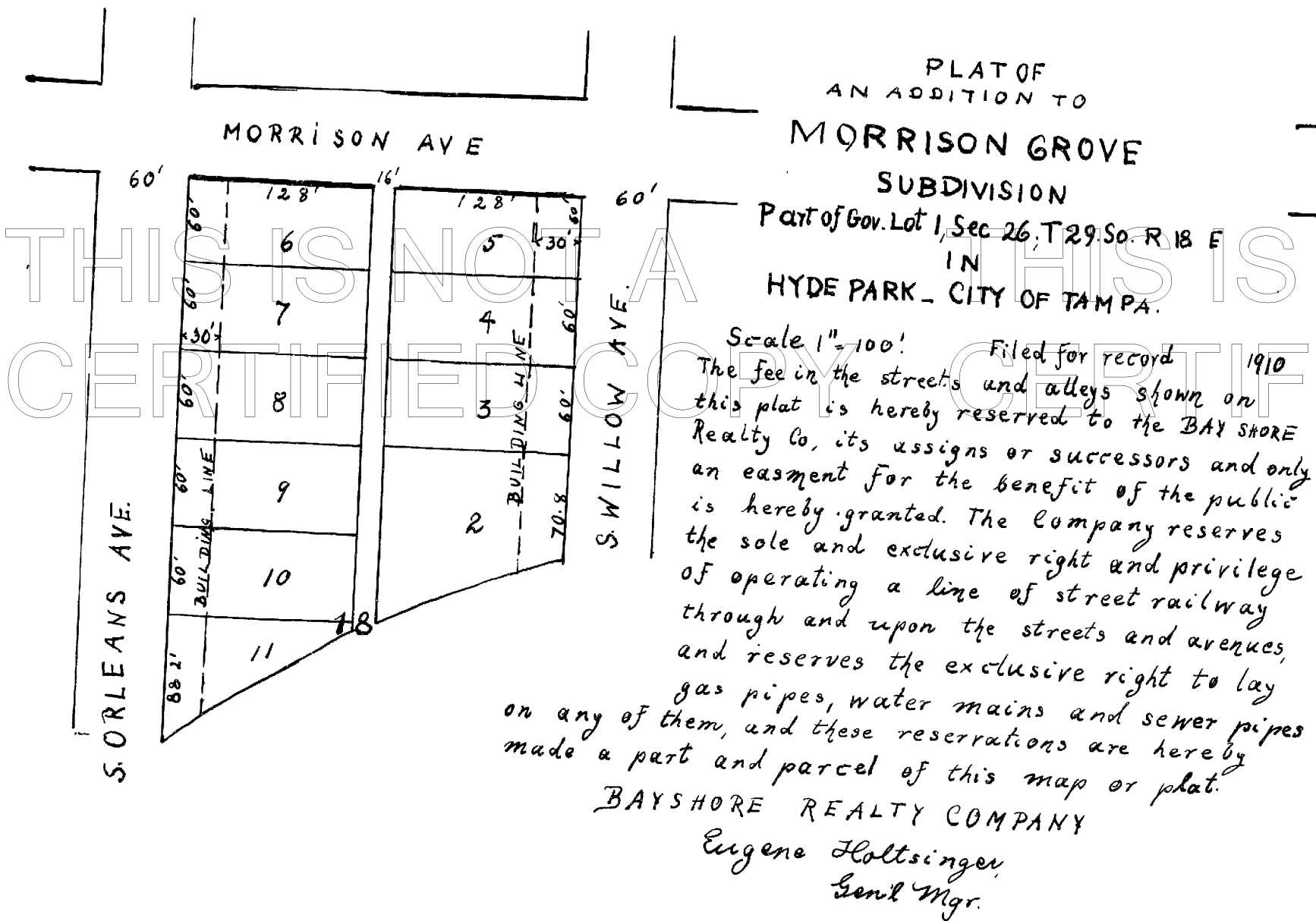


Book 6 P 24



THIS PLAT IS MADE AND RECORDED TO CORRECT THE TITLE OF A PLAT RECORDED JUNE 24, 1910, IN PLAT BOOK 6, PAGE 24, WHICH IN THE 5TH LINE SHOULD READ "N. E. 1/4" INSTEAD OF "60' T. 29 S."

Filed, June 29<sup>th</sup> 1910.  
C. M. Knott,  
Clerk.

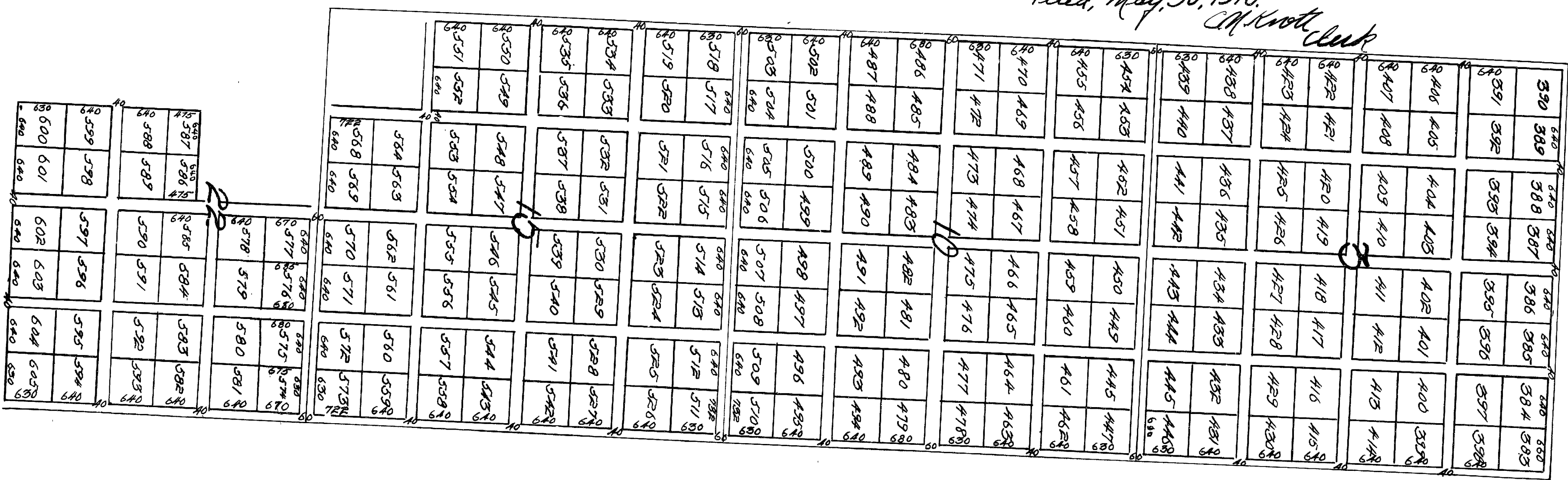
Refiled July 1<sup>st</sup> 1910 -  
C. M. Knott,  
Clerk.

Map of 1<sup>st</sup> Extension of Ruskin Colony Farms

Situate in Sections 8, 10, 15 and 22 of Township 32-9, Range, 19 E. in Hillsborough County Florida. U.S. Section Lines in Red



- Filed, May 30, 1910 -  
C. M. Knott, Clerk



STATE OF FLORIDA  
COUNTY OF HILLSBOROUGH

THIS IS TO CERTIFY THAT THIS PLAT IS A TRUE AND CORRECT COPY THAT HAS BEEN PHOTOGRAPHICALLY RE-CREATED FROM THE ORIGINAL PLAT AND THE PHOTOGRAPHIC REPRODUCTION HAS BEEN RETOUCHEE AS NECESSARY TO CONFORM THE COPY TO THE ORIGINAL PLAT DRAWING OR TRACING THEREOF RECORDED BY THE CLERK OF CIRCUIT COURT OF HILLSBOROUGH COUNTY, FLORIDA. THE ORIGINAL PLAT HAS BEEN PRESERVED AND IS AVAILABLE FOR EXAMINATION UPON REQUEST.

RECORD VERIFIED

WITNESS MY HAND AND OFFICIAL SEAL THIS 10 DAY OF December 19 06

RICHARD AKE, CLERK  
By *Richard M. Han* DEPUTY CLERK

